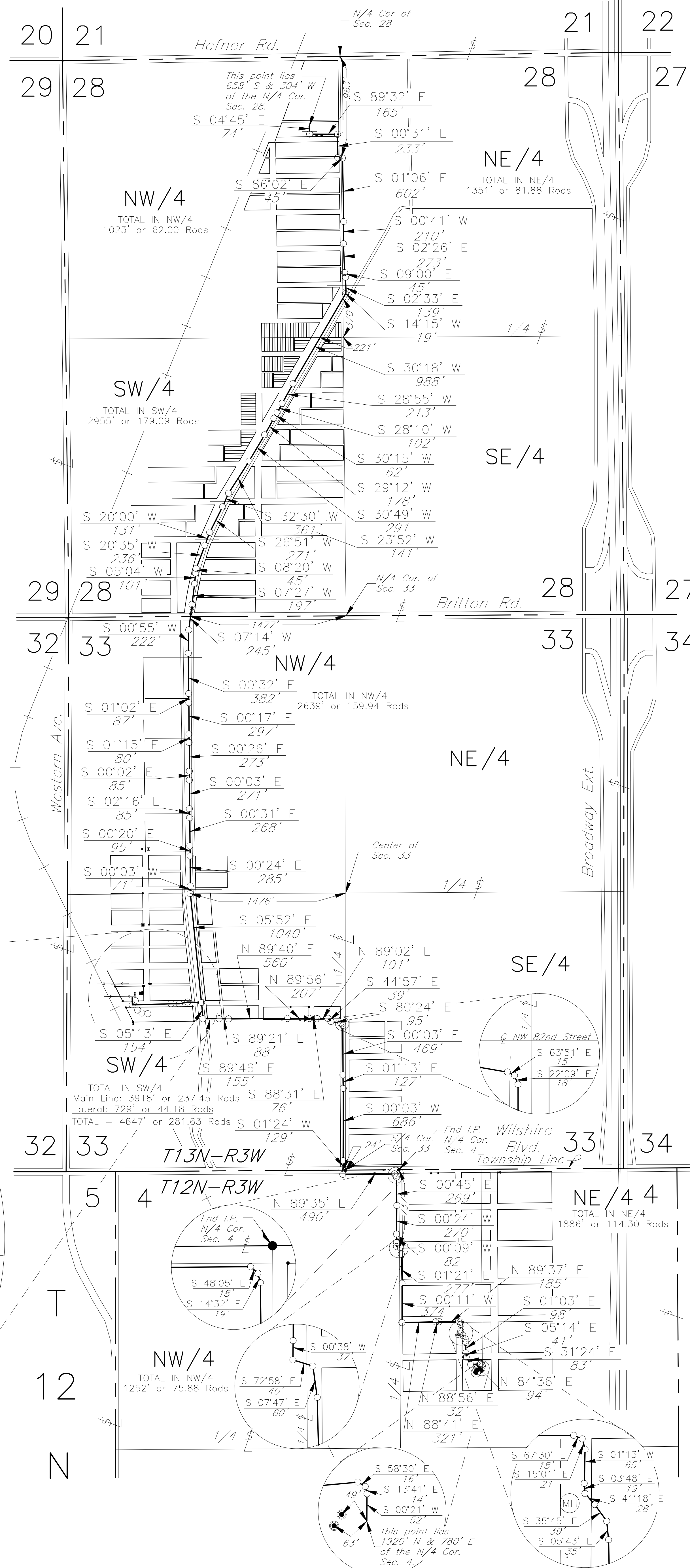
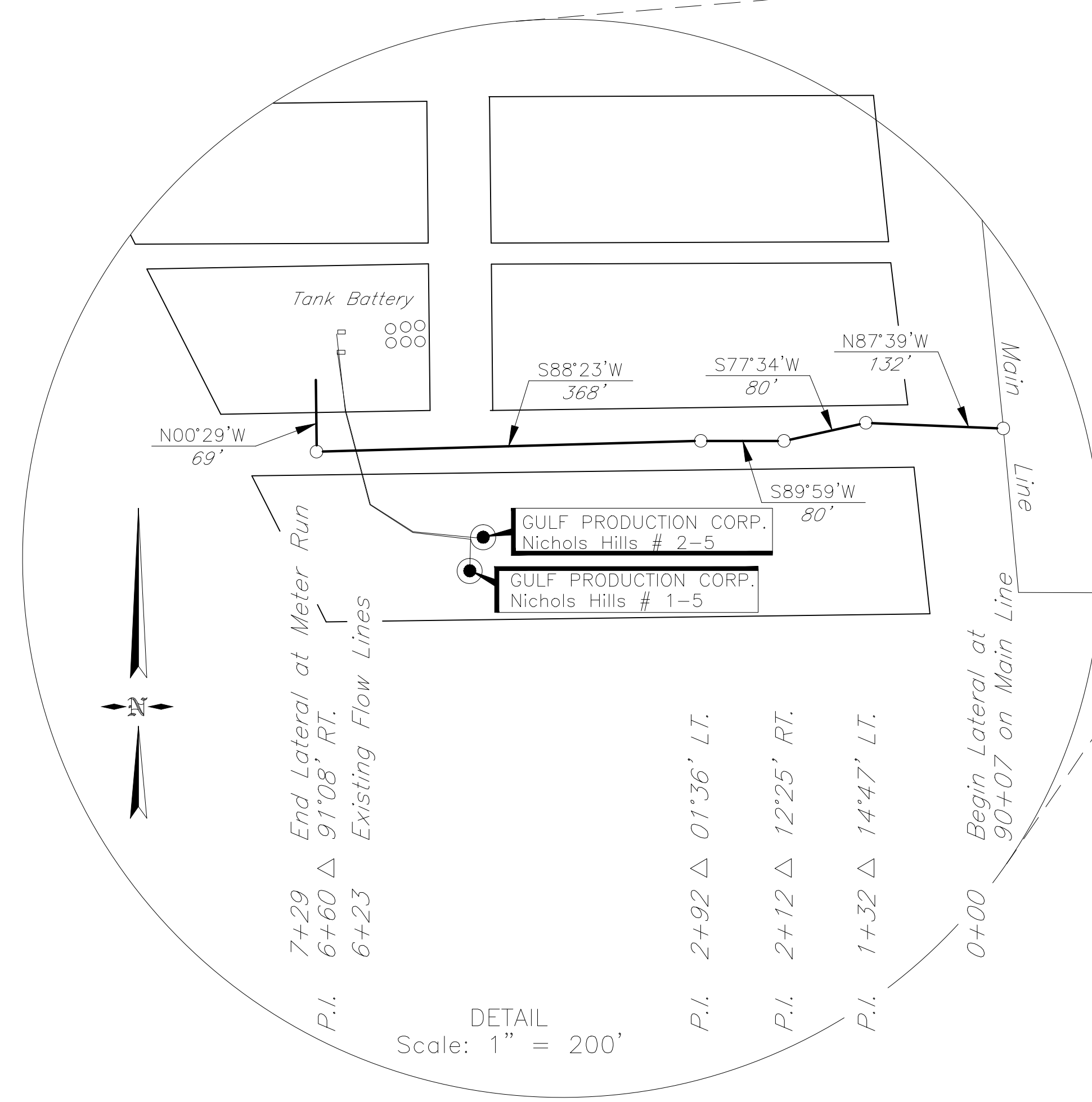


R 3 W



- 0+00 Begin As-Built Pipeline at Riser
- 0+17 Fence
- 0+49 @ NW 106th Street
- 0+68 Junction Box
- P.I. 0+74 Δ 84°47'LT.
- P.I. 3+39 Δ 89°01'RT.
- P.I. 5+72 Δ 85°31'LT.
- 5+94 N-S 1/4 §
- P.I. 6+17 Δ 84°56'RT.
- P.I. 12+19 Δ 01°47'RT.
- P.I. 14+29 Δ 03°07'LT.
- P.I. 17+02 Δ 06°34'LT.
- P.I. 17+47 Δ 06°27'RT., Begin Bore
- 18+15 @ 102nd Street
- P.I. 18+86 Δ 16°48'RT., End Bore
- P.I. 19+05 Δ 16°03'RT.
- 19+45 N-S 1/4 §
- 23+74 E-W 1/4 §
- P.I. 28+93 Δ 01°23'LT., Edge of Rd. ±10' Lt.
- P.I. 31+06 Δ 00°45'LT., Begin Bore.
- P.I. 32+08 Δ 02°05'RT., End Bore
- P.I. 32+70 Δ 01°03'LT., Edge of Rd. ±10' Lt.
- P.I. 34+48 Δ 01°37'RT.
- P.I. 37+39 Δ 01°41'RT.
- P.I. 41+00 Δ 08°38'LT., Tracer Box Wire
- 41+75 @ Street
- P.I. 42+41 Δ 02°59'RT., End Bore
- P.I. 45+12 Δ 06°51'LT.
- 45+76 @ NW 95th Street
- P.I. 46+43 Δ 00°35'RT.
- P.I. 48+79 Δ 12°15'LT.
- P.I. 49+24 Δ 03°16'LT., Begin Bore
- 49+56 @ NW 94th Street
- P.I. 50+25 Δ 02°23'RT., End Bore
- P.I. 52+22 Δ 00°13'LT., Begin Bore
- 53+29 @ E-W § Britton Road
- P.I. 54+67 Δ 06°19'LT., End Bore
- P.I. 56+89 Δ 01°27'LT., Begin Bore
- 57+15 @ Street
- 57+61 End Bore
- P.I. 60+71 Δ 00°30'LT., Tracer Wire Junction Box
- 61+06 @ NW 91st Street
- P.I. 61+58 Δ 00°45'RT., Tracer Wire Junction Box
- P.I. 64+55 Δ 00°58'LT., Edge of Rd. ±8' Lt.
- 64+92 @ NW 90th Street
- P.I. 65+35 Δ 00°49'RT., Begin Bore
- P.I. 68+08 Δ 00°24'RT., Edge of Rd. ±8' Lt.
- 68+50 @ NW 89th Street
- P.I. 68+93 Δ 00°01'LT., End Bore
- P.I. 71+64 Δ 02°13'LT., Begin Bore
- 72+10 @ NW 88th Street
- P.I. 72+49 Δ 01°45'RT., End Bore
- P.I. 75+17 Δ 00°11'RT., Edge of Rd. ±8' Lt.
- 75+71 @ NW 87th Street
- P.I. 76+12 Δ 00°04'LT., Edge of Rd. ±8' Lt.
- P.I. 78+97 Δ 00°27'RT., Edge of Rd. ±8' Lt.
- 79+31 @ NW 86th Street
- P.I. 79+68 Δ 05°55'LT., E-W 1/4 §
- P.I. 90+08 Δ 00°39'RT., Begin Lateral Line to the West
- P.I. 91+62 Δ 84°33'LT.
- 91+82 @ N. Bound Lane Classen Blvd.
- P.I. 93+17 Δ 00°25'RT., Top Bank
- 93+60 Top Bank
- P.I. 94+05 Δ 00°59'LT., End Bore
- P.I. 99+65 Δ 00°16'RT.
- P.I. 101+72 Δ 01°33'RT., Valve
- P.I. 102+48 Δ 02°27'LT.
- P.I. 103+49 Δ 46°01'RT.
- P.I. 103+88 Δ 35°27'LT.
- P.I. 104+83 Δ 16°33'RT.
- P.I. 104+98 Δ 41°42'RT.
- P.I. 105+16 Δ 22°06'RT.
- P.I. 109+85 Δ 01°10'LT., Begin Bore
- P.I. 111+12 Δ 01°16'RT., End Bore
- P.I. 117+98 Δ 01°21'RT., Begin Bore.
- 118+86 E-W § @ Wilshire Blvd.
- P.I. 119+27 Δ 91°49'LT., End Bore
- P.I. 124+17 Δ 42°20'RT.
- P.I. 124+35 Δ 33°33'RT.
- P.I. 124+54 Δ 13°47'RT.
- P.I. 127+23 Δ 01°09'RT.
- P.I. 129+93 Δ 00°15'LT.
- P.I. 130+75 Δ 00°29'RT., Tracer Wire Junction Box
- P.I. 131+12 Δ 73°36'LT.
- P.I. 131+52 Δ 65°11'RT.
- 131+38 N-S 1/4 §
- P.I. 132+12 Δ 06°26'RT.
- P.I. 134+89 Δ 01°32'RT.
- P.I. 138+63 Δ 91°30'LT.
- P.I. 141+84 Δ 00°15'RT., Top Bank
- P.I. 142+16 Δ 00°41'LT., Top Bank
- P.I. 144+01 Δ 22°53'RT.
- P.I. 144+19 Δ 52°29'RT.
- P.I. 144+40 Δ 16°14'RT.
- P.I. 145+05 Δ 05°01'LT.
- P.I. 145+24 Δ 37°30'LT.
- P.I. 145+52 Δ 05°33'RT.
- P.I. 145+91 Δ 30°02'RT.
- P.I. 146+26 Δ 04°40'RT.
- P.I. 147+24 Δ 04°11'LT.
- P.I. 147+65 Δ 26°10'LT.
- P.I. 148+48 Δ 64°00'LT.
- P.I. 149+42 Δ 36°54'RT.
- P.I. 149+58 Δ 44°49'RT.
- P.I. 149+72 Δ 14°02'RT.
- 150+24 End As-Built Pipeline at Riser

NOTE:  
The ties and footages shown on this plat are from lines of occupation from a survey made on-the-ground and/or bearings and distances from the General Land Office Plat of the area shown and may not be the actual property corners. This plat DOES NOT represent a true boundary survey.



NO.	REVISION	DATE	BY	APPR.
<b>TONTZ COOPER PIPELINE, LLC</b> OKLAHOMA CITY, OKLAHOMA				
PLAT SHOWING <b>AS-BUILT PIPELINE IN SECTIONS 28 &amp; 33, T13N-R3W AND SECTION 4, T12N-R3W, OKLAHOMA COUNTY, OKLAHOMA</b>				
SURVEYING AND MAPPING BY <b>TOPOGRAPHIC LAND SURVEYORS</b> 6709 N. Classen, Okla. City, OK, 73116 (405) 843-4847 Certificate of Authorization No. 1293, Exp. June 30, 1999				
SCALE: 1" = 1000'	SURV. BY: GH	DRAWING NUMBER: 103226-G4-01-E		
DATE: 4-5-99	DRAWN BY: BS	SHEET 1 OF 1		
FILE: G4001E.dwg	APPR. BY: WF			