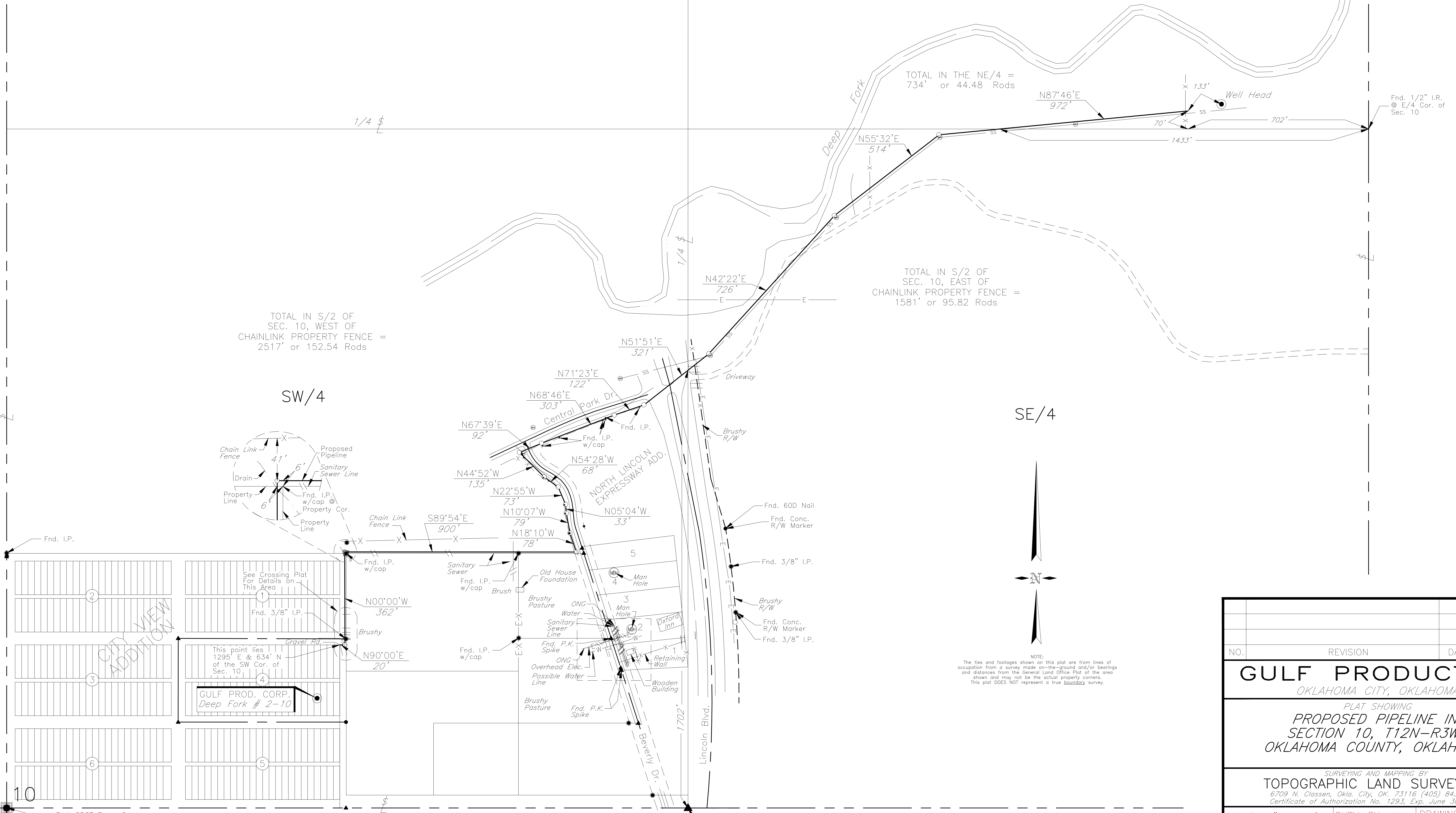


T 12 N - R 3 W

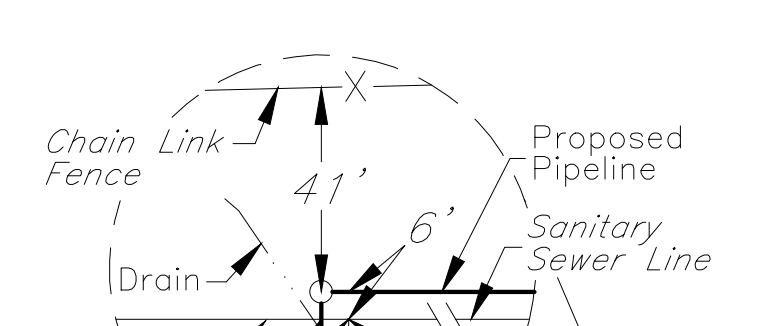
- 0+00 Begin Proposed Pipeline Survey at NE Cor. of Lot
- 0+01 S. Edge of Gravel Rd.
- 0+13 Q of Gravel Rd.
- 0+30 Δ 90°00' Lt.
- 0+23 N. Edge of Gravel Rd.
- 0+42 Top
- 0+43 Q of Drain
- 0+44 Top
- 0+60 Toe
- 0+69 Top
- 0+76 Toe
- 1+39 Natural Ground
- 3+73 Q of Drain (0.5' Deep)
- 3+76 Property Cor. 6' Rt.
- 3+82 Δ 90°06' Rt.
- 10+37 Chain Link Fnc. 41' N.
- 10+58 Sanitary Sewer Line
- 10+58 Property Cor. 5' Rt.
- 12+82 Δ 108°16' Lt.
- 13+35 Q of Driveway
- 13+60 Δ 88°03' Rt.
- 13+64 Fnd. I.R. 2.8' Lt.
- 14+01 Fire Hydrant 2.2' Rt.
- 14+01 Q Beverly Drive 24' Rt.
- 14+09 Guy Wire Anchor 2.5' Lt.
- 13+94 Powerline
- 14+37 Fnd. I.R. 4.7' Lt., Pwr. Pole 5.6' Lt.
- 14+39 Δ 05°03' Rt.
- 14+72 Δ 17°51' Lt., Fnd. I.R. 4.8' Lt.
- 14+81 Q Beverly Drive 28' Rt.
- 15+25 Q Beverly Drive 30' Rt.
- 15+45 Δ 31°33' Lt.
- 15+49 Q Beverly Drive 27' Rt.
- 15+61 Fc. Cor. 1' Lt.
- 15+63 Pwr. Pole 5' Rt.
- 15+70 Guy Wire Anchor 14' Lt.
- 15+90 Fnd. I.R. 1.5' Lt.
- 15+92 Q Beverly Drive 29' Rt.
- 16+41 Q Beverly Drive 21' Rt.
- 17+01 Under Ground Electric Cable
- 17+21 Fnd. I.R. 2.5' Lt., Fc. Cor. 3' Lt.
- 17+35 Fiber Optic Line Manhole 6' Rt.
- 17+48 Δ 112°31' Rt.
- 17+55 Buried Fiber Optic Line
- 17+64 Top of Curb
- 17+65 Bottom of Curb
- 17+85 Q Beverly Drive
- 18+09 Bottom of Curb
- 18+10 Top of Curb, Fire Hydrant 71' Lt.
- 18+33 Buried Fiber Optic Line 69' Lt.
- 18+39 Fiber Optic Box 65' Lt.
- 18+40 Fnd. I.R. 9.7' Rt.
- 18+40 Δ 01°07' Rt., Buried Fiber Optic Line
- 19+12 Fnd. I.R. 3.4' Rt.
- 19+14 Q Central Park Drive 40' Lt.
- 19+36 Buried Fiber Optic Line 15' Lt.
- 20+84 Q Central Park Drive 43' Lt.
- 20+94 Fnd. I.R. 2.7' Rt.
- 21+06 Fnd. I.R. 3.3' Rt.
- 21+08 Fnd. I.R. 3.0' Lt.
- 21+43 Δ 02°37' Rt., Parking Area 4' Lt.
- 21+58 Buried Fiber Optic Line 12' Lt.
- 22+46 Fnd. I.R. 4.3' Rt.
- 22+65 Δ 19°32' Lt.
- 22+90 Top of Curb
- 22+91 Bottom of Curb, Storm Sewer Grate
- 23+33 Q S. Bound Lane Lincoln Blvd.
- 23+90 Q Median
- 24+10 Bottom of Curb
- 24+12 Top of Curb
- 24+15 Bottom of Curb
- 24+54 Q N. Bound Lane Lincoln Blvd.
- 24+83 N-S 1/4 Q
- 24+88 Bottom of Curb
- 24+89 Top of Curb
- 25+01 Top Bank
- 25+17 Property Line, Chainlink Fc.
- 25+31 Q Ditch
- 25+58 Top Bank
- 25+64 Q Sanitary Sewer
- 25+86 Δ 09°29' Lt., Manhole 10' Rt.
- 28+71 E-W Powerline, Top Bank Deep Fork 26' Lt.
- 30+09 Paved Road
- 31+29 Q Paved Road
- 32+34 Top Bank Deep Fork 12' Lt.
- 33+12 Δ 13°10' Rt., Manhole 10' Rt.
- 34+01 Q Drain
- 34+85 Fc.
- 38+26 Δ 32°14' Rt., Manhole 10' Rt.
- 40+64 E-W 1/4 Q
- 43+59 Manhole 10' Rt.
- 47+86 Fc., Enter Pad Area
- 47+98 End Survey of Proposed Pipeline



TOTAL IN S/2 OF SEC. 10, WEST OF CHAINLINK PROPERTY FENCE = 2517' or 152.54 Rods

TOTAL IN S/2 OF SEC. 10, EAST OF CHAINLINK PROPERTY FENCE = 1581' or 95.82 Rods

TOTAL IN THE NE/4 = 734' or 44.48 Rods



NOTE: The lines and footages shown on this plan are from lines of occupation from a survey made on-the-ground and/or bearings and distances from the General Land Office Plat of the area shown and may not be the actual property corners. This plan DOES NOT represent a true boundary survey.

NO.	REVISION	DATE	BY	APPR.
GULF PRODUCTION OKLAHOMA CITY, OKLAHOMA				
PLAT SHOWING PROPOSED PIPELINE IN SECTION 10, T12N-R3W, OKLAHOMA COUNTY, OKLAHOMA				
SURVEYING AND MAPPING BY TOPOGRAPHIC LAND SURVEYORS 6709 N. Classen, Okla. City, OK, 73116 (405) 843-4847 Certificate of Authorization No. 1293, Exp. June 30, 2001				
SCALE: 1" = 300'	SURV. BY: JW	DRAWING NUMBER: 107088-G4-36-E		
DATE: 12/8/2000	DRAWN BY: WF	SHEET 1 OF 1		
FILE: G4036E.dwg	APPR. BY: WF			

9 10
16 15

Fnd. ODOT Brass Cap @ SW Cor. of Sec. 10

Fnd. P.K. Spike @ S/4 Cor. of Sec. 10